

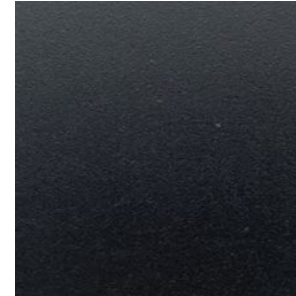
PRIME SERIES SPECIFICATIONS

STANDARD MAT SPECIFICATIONS

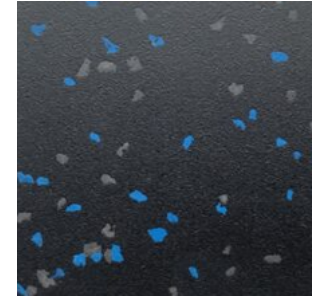
DIMENSION
4' x 6'

THICKNESS
3/8" (9.5mm)

TEST TYPE	ASTM	RESULTS
Hardness Shore A	D-2240	75 +/- 5
Wear Layer Thickness	F410	> 0.050 (PASSES)
Static Load Resistance	F970	0.002 (PASSES)
Resistance to Chemicals	F925	GOOD
Resistance to Heat	F1514	4.29 (PASSES)
Abrasion Resistance	D3389	< 0.5 GRAMS LOSS
Dimensional Stability	F2199	0.12 (PASSES)
Critical Radiant Flux	E648-03	CLASS II
Moisture Absorbtion	D570	0.27%
Coefficient of Friction	C1028	> 0.80 WET > 0.64 DRY



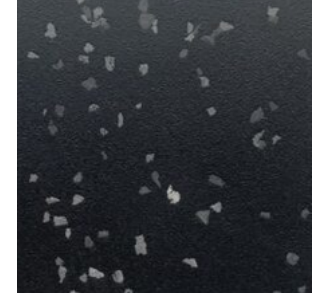
BLACK



ROYAL BLUE



DESERT SAND



THUNDER GREY



RUBY RED

NOTE: Physical properties can vary by product type. Information above applies to this product only.